

How to gain RSPO Supply Chain Certification

This guide describes the different options for companies seeking Supply Chain Certification, which means your company purchases and physically handles palm oil, or ingredients and products which contain derivatives of palm oil (PO) and palm kernel oil (PKO).

The RSPO has two certification systems:

1. One to ensure that palm oil is produced sustainably called “Principles & Criteria certification”;
2. The other, to ensure the integrity of the trade in sustainable palm oil, i.e. that palm oil sold as sustainable palm oil has indeed been produced by certified plantations, called the Supply Chain Certification Standard.

Both systems involve third-party certification audits by accredited certification bodies. RSPO certification ensures all users and consumers are contributing to the production of certified sustainable palm oil, and thereby reducing the negative social and environment impact of oil palm when its produced unsustainably.

The Supply Chain

1. RSPO Principles & Criteria

The sustainable palm oil supply chain starts with the grower. From smallholders to large plantations, growers that supply to certified mills must be certified and audited against the RSPO Principles & Criteria, as must the mills. The **RSPO Principles & Criteria** are based on eight core principles.



1 Commitment to transparency



5 Environmental responsibility and conservation of natural resources and biodiversity



2 Compliance with applicable laws and regulations



6 Responsible consideration of employees, and of individuals and communities affected by growers and mills



3 Commitment to long-term economic and financial viability



7 Responsible development of new plantings



4 Use of appropriate best practices by growers and millers

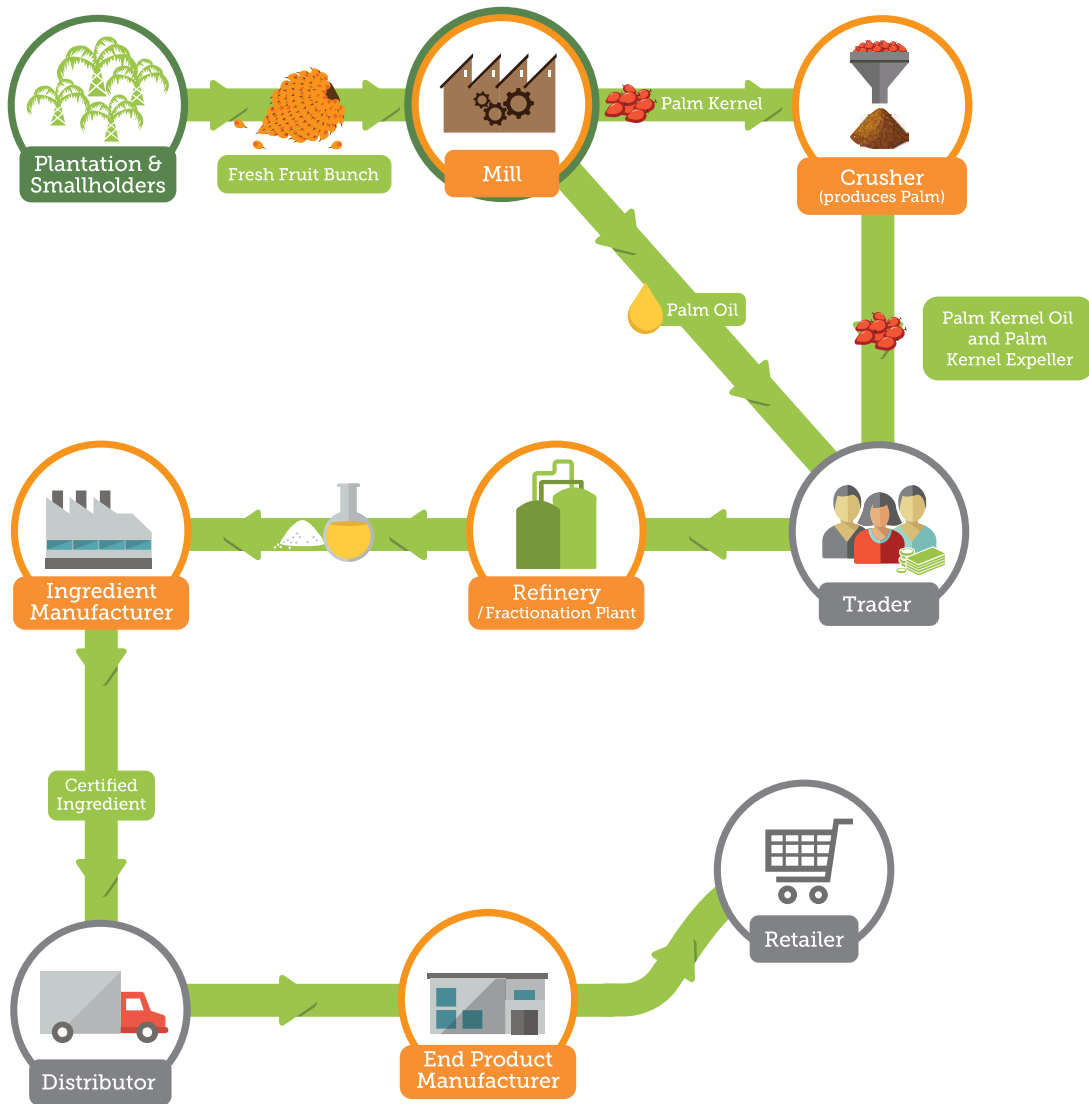


8 Commitment to continuous improvement in key areas of activity

2. RSPO Supply Chain Standard

Mills and other supply chain actors are certified under the **RSPO Supply Chain Certification Standard (SCCS)**. Traders and Distributors who take legal ownership, store and sell products to their customers but do not unpack, repack or relabel those products are exempt from Supply Chain Certification. They can apply for a traders or distributors license issued by RSPO. Download the relevant documents from <https://www.rspo.org/key-documents/certification/rspo-supply-chain-certification>.

How the RSPO-certified supply chain works



Certified under the RSPO Principle and Criteria

Certified under the Supply Chain Certification Standard

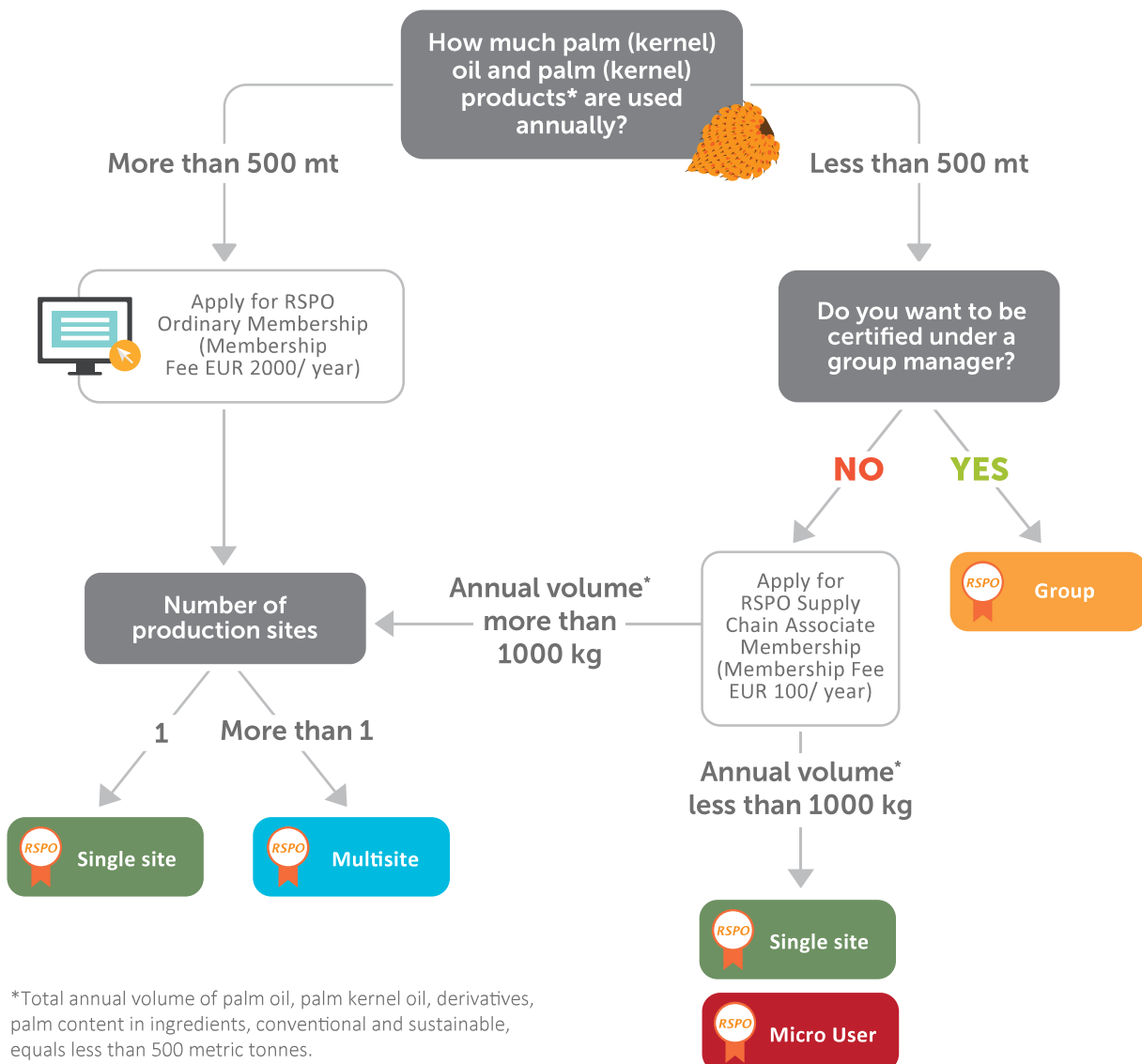
Exempt from certification if they are not physically handling certified materials

Options for Supply Chain Certification

There are four certification options under the RSPO Supply Chain Certification Standard. These are:



Which supply chain certification option applies to your company?



Certification Options Explained

1. Group

Group offers an option to achieve RSPO Supply Chain Certification where the direct costs of certification are shared between independent but eligible members of a group. Members of the group agree to adhere to the rules of a group structure under the guidance of a group management entity. The group will work under the direction of a Group Manager, and in accordance with an Internal Control System (ICS).



Benefit: Costs and resources are shared amongst the group.

Requirements:

- Total annual volume of palm oil, palm kernel oil, derivatives, palm content in ingredients, conventional and sustainable equals less than 500 metric tonnes.
- Group should consist of independent organisations, each acting as separate legal entities within the palm oil supply chain.

Establishing a Group:

1. Choose a group manager. Supply Chain Group Managers can be found [here](#)
2. A participation fee is charged and benefits include training, up-to-date system documentation, internal audits and consultancy service regarding the RSPO certification.
3. Under the supervision of a Group Manager, the group members can implement the RSPO supply chain standard but do not have to become RSPO members.

Role of Group Manager:

- Maintain Internal Control System (ICS)
- Complete Internal Audits as required
- Ensure compliance

Role of Certification Body:

- Audit subset of the group members and ICS as required

Responsibility of the Group Member:

- Comply with RSPO Supply Chain Certification Standard
- Follow the RSPO Rules on Claims and Communications
- Use the group certification number, sub code and correct supply chain model in all documents.

2. Micro-user

Micro-users are companies that use less than 1 tonne = 1,000 kg of oil palm product. A micro-user can choose from Group Certification (as previously described) or Single Site Certification (described below).



Benefit: There is no requirement for a physical surveillance audit. Reduced audit regime considering the small volumes used by micro-users. Initial and Recertification audits involve a physical audit.

Requirements:

- RSPO Membership as **Supply Chain Associate**
- All audits should be conducted by an independent accredited certification body (CB). Find a list of accredited certifications bodies [here](#)

3. Single-Site

Single Site Certification applies to a single business of any size or type wishing to achieve supply chain certification.



Benefit: Allows the site to manage its RSPO certification independently.

Requirements:

- RSPO Membership as a **Supply Chain Associate**, or as **Ordinary Member**.
- All audits by an independent accredited certification body (CB).

4. Multi-site

Multi-site Certification is a certification option for a group of sites that have a contractual link, a defined central office and a minimum of two participating sites. These sites may be groups of refineries, CGMs or foodservice outlets brought together under a central office and administered using an Internal Control System (ICS). The organisations shall define the geographic area, the number and identity of sites.



Benefit: Not all sites have to undergo annual audits, therefore have the potential to reduce costs and resource.

Requirements:

- RSPO Membership as an Ordinary Member; use more than 500 metric tonnes per year, or Supply Chain Associate; use less than 500 metric tonnes per year
- Annual Internal audit of all sites by Internal Control System (ICS). ICS ensures all participating sites are trained on the requirements for RSPO supply chain certification
- There is no requirement for sites to be in the same country
- Annual audits are for ICS and a selection of sites by accredited certification bodies

Comparison of requirements

REQUIREMENTS	GROUP	MICRO	SINGLE	MULTI-SITE
RSPO membership	No, Group Manager will be the RSPO member	Yes	Yes	Yes
Membership Type: Supply Chain Associate and Ordinary	N.A.	Supply Chain Associate less than 500 tonnes per year	Supply Chain Associate less than 500 tonnes or Ordinary member more than 500 tonnes per year	Supply Chain Associate less than 500 tonnes or Ordinary member more than 500 tonnes per year
Initial certification and recertification	Group manager conducts audit after which company is added to the group and certified. The CB audits a subset and ICS	CB	CB	Subset of all sites and ICS by CB
Annual Surveillance Audit	Group Manager and subset of group by CB	Desktop audit by CB	Yes	Subset of all sites and ICS by CB
Internal audits	Yes, all group members by Group Manager	Yes	Yes	Yes
Trademark	Yes, Group Managers hold the trademark license number	Yes. Apply to use RSPO Trademark	Yes. Apply to use RSPO Trademark	Yes. Apply to use RSPO Trademark

Supporting Information Online

Code of Conduct:

<http://www.rspo.org/resources/key-documents/membership>

Membership Application Form:

<http://www.rspo.org/members/apply>

RSPO Membership Type:

<http://www.rspo.org/members/categories>



RSPO PalmTrace

<https://palmtrace.rspo.org/>

RSPO Accredited Certification Body:

www.rspo.org/certification/bodies

RSPO Supply Chain Certification Standard:

<https://www.rspo.org/key-documents/certification/rspo-supply-chain-certification>

RSPO Rules on Communication and Claims

<http://www.rspo.org/resources/supplementary-materials/communications>

RSPO Traders & Distributors Guide:

<https://www.rspo.org/key-documents/certification/rspo-supply-chain-certification>

RSPO Trademark Application:

<https://www.rspo.org/trademark/application>

CONTACT US

For RSPO PalmTrace related questions:

palmoil.support@utz.org

For membership related questions:

membership@rspo.org

For supply chain certification related questions:

certification@rspo.org

For trademark related questions:

trademark@rspo.org

www.rspo.org

Have a
question?



<https://askrspo.custhelp.com/app/answers/list>